

# NEWPORT COMMUNITY FORUM

# NEWS

APRIL 2011

## Newport Community Forum

Welcome to the Newport Community Forum Newsletter. It's purpose is to update you on the exciting projects that people are working on for the benefit of our community. We would like to make sure that everyone is kept informed and given the chance to comment and get involved.

Some of the following projects arose from the Newport Community Plan, or from the Area Development Plan and others came about through the work of groups who have now become involved with the Forum.

If you would like to become involved, like more information, or wish to comment, please contact Reg Atkinson, Community Forum Chairperson on 01239 820889 or Town Councillor Paul Harries, on 01239 820809

## Newport Play Area



Grwp Teuluoedd Trefdraeth - Newport Families' Group was set up by local families aiming to improve the children's play area at the bottom of Lower St. Mary Street.

It was apparent that it wasn't being used as much as it could and, from speaking to a lot of people, it was clear that many weren't even aware it existed!

It's a lovely spot, away from busy roads, near the school, in the heart of the town and accessible from the estuary path.

We aim to raise funds and, working with Pembrokeshire County Council and Newport Town Council, give it

*continued on page 4*



Cronfa Amaethyddol Ewrop ar gyfer  
Datblygu Gwledig: Ewrop yn Buddsoddi  
mewn Ardaloesdd Gwledig  
The European Agricultural Fund for  
Rural Development: Europe Investing in  
Rural Areas



Llywodraeth Cynulliad Cymru  
Welsh Assembly Government



St David's day 2011 saw Newport awarded the status of a *Walkers are Welcome* town. Perfect timing! *Walkers are Welcome* is a community led initiative involving many people in Newport and the surrounding area. It is hoped that it will help to promote the area as the ideal place for walkers of various abilities, whether they live locally or are tourists.

To achieve the status the following criteria needed to be met:

- **Demonstration of local popular support for the concept** - Over two hundred signatures were collected from local residents demonstrating their support;
- **Formal endorsement of application of Walkers are**

**Welcome by the Local Council** - Letters of support were provided by Newport Town Council as well as Newport Paths Group and the National Park;

- **Action to ensure that facilities for walkers are maintained in a good condition** - We have magnificent walks in and around Newport and the National Park Rangers and the volunteers in the Newport Paths Groups do a great job in ensuring that paths remain open and are in good condition. (Did you know that the Pembrokeshire Coastal Path was voted the second best coastal walk in the entire WORLD?);
- **Adequate marketing of Walkers are Welcome status** - the Walkers are Welcome website will be linked to Newport's website and businesses who are members of Newport WAW will be able use this as an advertising tool. Members will also be given window stickers to show that they welcome walkers, and information packs will be available for walkers and businesses. (We are currently inviting businesses to become members. If you do not get your invitation, please use the contact details below).
- **Encouragement of walking using public transport** - We have a great coastal and general

bus services and the Green Dragon is a great service for those wishing to explore the Preselis.

- **Demonstration of mechanisms in place to maintain Walkers are Welcome status** - Newport Walkers are Welcome has a committee which will meet quarterly to ensure that the status is maintained and discuss areas

that we can improve or develop further. 3

Newport clearly deserves this status and it is hoped that it will help the tourist industry and subsequently, the wider local economy. For further information please contact Dale Rees on 01239 820288 or email [ybryn@hotmail.com](mailto:ybryn@hotmail.com)

## Newport Memorial Hall



There is so much to do at Newport Memorial Hall and you can find out about it by visiting [www.newportmemorialhall.co.uk](http://www.newportmemorialhall.co.uk) and joining the free e-mail newsletter list where you will get occasional emails letting you know what's new at the Hall.

Here's a taster of what's on offer....'Newport Bank Holiday Events' is a weekend of music, bike rides, kayaking, workshops and stalls! Starting on Saturday 28 May at Newport Memorial Hall we have an un-missable evening of music

with BARAKA, a unique combination of musicians from Ghana, Senegal, Dominica and Northern and Southern Ireland which will have you dancing all night long plus we have delicious African- Caribbean food and local support act. Bank Holiday Monday 30 May sees a vibrant full day of workshops, activities for kids and a hall packed with stalls from fresh organic produce to stunning hand made crafts and more. The family friendly cherub bike race will start and finish at the Hall and there will be plenty of refreshments.

Don' t forget about Newport Memorial Hall's weekly activities such as Yoga, Tai Chi, Just Art For Kids, Come Dancing, 5 Rhythms Dancing, Hip Hop and Modern Dance, Youth Club, Senior Citizen Lunch Club, Bowls Club, Introduction to Computers and more. We have lots of new classes

*continued on page 4*

Newport Town Council have, for some time, wanted to improve the use of Parc y Plant and, following a community visioning workshop facilitated by PLANED, the idea was supported to develop the site and encourage more community use.

Draft plans were subsequently displayed at the Winter Festival and an overwhelming majority chose plans that would develop the area rather than just leaving it as it is and planting a few more trees.

The plans which include a measured walking / running path, a 5-a-side football pitch, an activity or fitness trail, providing an opportunity for people of all ages and abilities to get physically active, have now been submitted for Planning Permission.

Around the edge of the field, fruit trees and bushes are going to be planted for people to 'scrum'. The Pembrokeshire Coast National Park has been very supportive and

will be helping with the supply and planting of native fruit trees. It will also incorporate a herb garden and shrubs that can be used by people in flower arrangements. The local primary school will be involved in the project.

PLANED has agreed to fund the hard landscaping work with Newport Town Council contributing to the project.

The Parc and equipment will be free for all to use.

If you would like to get involved or want to see the plans, please contact Paul Harries on 01239 820809

*continued from page 1*

a new lease of life. We are hoping to get as many people from Newport and the surrounding area involved as possible, so if you are interested please contact either Susie on 07968917773 or Angharad on 07794641010

## Newport Memorial Hall

*continued from page 3*

in the pipe line, to find out about these and more information about current ones, please visit [www.newportmemorialhall.co.uk](http://www.newportmemorialhall.co.uk) and join our free email newsletter list.

Newport Memorial Hall is always looking for new volunteers to help with the Senior Citizens Lunch Club or to be involved with our events and activities volunteer group. If you are interested, please contact [siobhan@newportmemorialhall.co.uk](mailto:siobhan@newportmemorialhall.co.uk).



*Yr Hen Gastell as it is today!*

'Tucked away behind these trees are the remains of a 12<sup>th</sup> Century castle. The grassy ridges and hollows mark the defensive banks and ditches which surrounded the timber castle. Wander around this

small site and imagine life as a Norman Lord almost 1000 years ago'

Many people have wondered what the mound by the playing field was and children have long since been using the ditches and mounds for cycling stunts and a play area. PLANED, PCNPA and the Town Council have been working together to give people more information about Yr Hen Gastell, to tell the history of the Castle and bring the area to life. Next time you are there, have a look at the information on the panel now installed at Yr Hen Castell

## Yr Hen Gastell

Wedi eu cuddio y tu ôl i'r coed saif allan castell a'r 12fed ganrif. Mae'r cefnennau a'r pantiâu glaswelltlog yn dynodi'r cloddiau a'r ffosydd amddiffynnol oedd yn amgylchynu'r castell pren. Crwydrwch o amgylch y safle bychan hwn a chewch ddechymgu bywyd fel Arglwydd Normanaidd bron i 1000 o flynyddoedd yn ôl.

### O Nanhyfer i Dreffraeth

Ynhyg bach oedd a wydder yn sicr am y safle hwn. Cedor (i'r Normanaid, lu'n brwydro'n barhaus â'r Cymry lleol yng Nghastell Nanhyfer sydd gerffwrdd, drost eu cwti ar safle amddiffynnol, gwre Nanhyfer gan Ralfio'r llecion cyngodol hwn or ffordd farddyswbyd, wedi ei amgylchynu â ffarau ffynellon. O'r fan hon fe datblygwyd cadarnia a ddechreuodd Treffraeth datblygu fel tref.

### O goed cadarn i gerrig cryfan

Calodd cylfod cyntaf hŷ Treffraeth ei garolwynio o amgylch yr hen Castell hwn. Wledd pryseilio o amgylch yr hen Castell hwn. Normanaid i safle mwy uchel ar y bryn sy'n edych i lawr drws Dreffraeth yn eghalluol y dryddedd ganrif ar ôl. Tra fe adeiladwyd castell carteg mawreddig, mwy o lair ei myny nodi eu goruchafleth a gwellu amddiffynnydd y dref. Mae sawl Treffraeth balluach yn addu preit, ond gallir ei weld o ochr y ffordd.

### Dysgwch fwy

- Ymwelwch â'r eglwys Normanaidd
- Cerdwch heibio'r castell a'r dryddedd gerall or ddeg llyn ar y ffordd ar yr eiddo preit!
- Archwilio safle Castell Nanhyfer a ddygwyd mwy am y freddyd am oruchafleth rhwng y Cymry a'r Normanaid
- Ymwelwch â gwaeron Treffraeth i ddygw mwy am hanes Treffraeth
- [www.newport-pembs.co.uk](http://www.newport-pembs.co.uk)
- Ymwelwch â gwaeron Parc Cenedlaethol Arfordir Penfro ar weblle [www.arfordirpenfro.org.uk](http://www.arfordirpenfro.org.uk)

## The Old Castle

Tucked away behind these trees are the remains of a 12th century castle. The grassy ridges and hollows mark the defensive banks and ditches which surrounded the timber castle. Wander around this small site and imagine life as a Norman Lord almost 1000 years ago.

### From Nevern to Newport

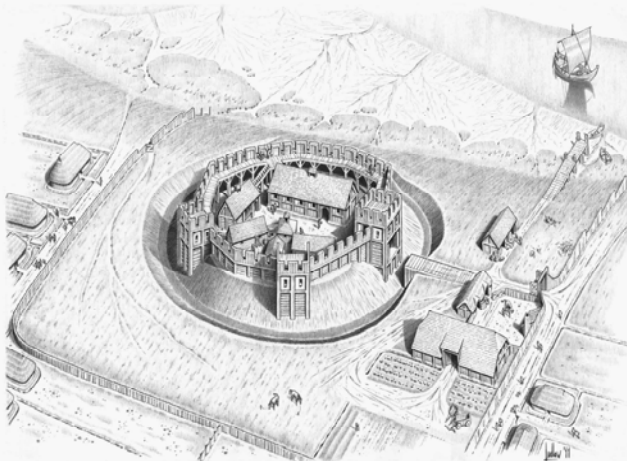
New little is known about this site for sure. It is thought that the Normans, who were in a constant power struggle with the local Welsh of nearby Nevern castle, abandoned the rugged, defensive site of Nevern in favour of this sheltered spot on a navigable estuary, surrounded by gently sloping, fertile land. From here they established a stronghold and Newport began to develop as a town.

### From trusty timber to sturdy stone

The first phase in the growth of Newport was centred on this old castle. After asserting their power the Normans moved to a more prominent site on the hill overlooking Newport in the mid 12th century. There they built a bigger, grander stone castle to mark their dominance and improve the defence of the town. Newport castle is now in private ownership, but can be viewed from the roadside.

### Find out more

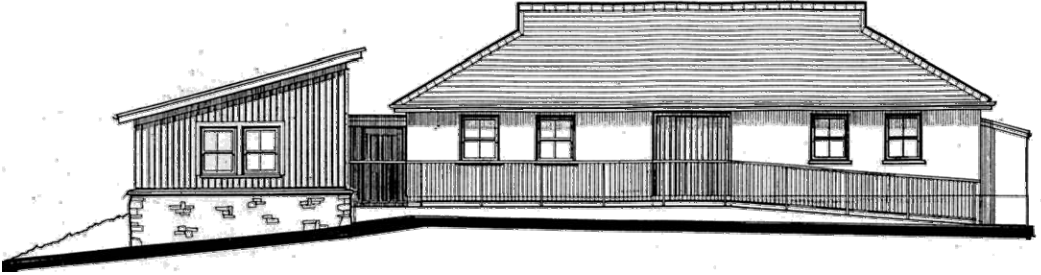
- Visit the Norman church
- Walk past the 13th century castle (adjacent to the church and privately owned)
- Explore the site of Nevern Castle and find out more about the Welsh - Norman power struggle
- Visit the Newport Town website to find out more about the history of Newport [www.newport-pembs.co.uk](http://www.newport-pembs.co.uk)
- Visit the Penfroshire Coast National Park website [www.pcnpa.org.uk](http://www.pcnpa.org.uk)



Derfyn amlunio a Hen Castell Treffraeth tua 1200  
Illustration by Neil Stubbs

Reconstruction drawing of the Old Newport Castle circa 1200  
Illustration by Neil Stubbs





**Do you struggle to find childcare locally? Do you want to work but have no one to look after the children?**

Following a very positive response to a survey undertaken last year of parents who would support a childcare club in Newport, **PLANED** has been working with the Trustees of the Newport Playing fields to extend the changing room building to provide a space for a 'Kids Club' catering for children aged 3 -14yrs, as well morning and afternoon childcare provision for part time pupils.

A survey of existing community buildings was carried out and it was clear that the best option was to extend the Playing Fields changing room building where there is an old 'lorry back' used for storage of sports equipment at the present time.

The new room has been designed to meet the needs of children whilst also giving the opportunity for other community and sporting activities to be held when not used by the

Childcare Club. It will be made as environmentally friendly as possible and the existing building also up graded to similar standards.

The existing users of the building are fully behind the project, having been consulted at every step of the planning process. They will have proper storage cupboards and a more efficient heating and hot water system for their sporting activities. The new kitchen area will meet standards required for the provision of light refreshments and all parts of the building will be fully accessible. Children will be cared for by fully qualified childcare workers and provided with a range of interesting and challenging activities. It will be registered with the CSSIW (Care and Social Services Inspectorate for Wales) who have welcomed the project. It will also be open to children who are just looking for something to do after school. Being in the grounds of the school, there will be no need for transport to another part of town and parents can feel confident of their child's safety.

We are hoping that the building work will begin in June ready for the childcare club to be **'OPEN FOR BUSINESS'** from the start of the September term.

We shall be fund raising to purchase toys and other equipment.

If you would like to register an interest in using the club for your children, working in the club or supporting it in other ways, please contact Abbe Rees, Chair of Clwb Plant Ar Ol Ysgol Trefdraeth/ Newport Afterschool Kids Club.

## Newport Street Market

Many people have fond memories and stories of market day in Newport and talk of it as the chance to meet people and buy local provisions for the week. People walked for many miles to purchase the best of local produce and Newport Town Council would like to reinstate it.

We have received support from a large number of Newport residents and the Newport and District Chamber of Trade. Some of the Councillors have met with Nia Siggins from the St. Dogmaels Local Producers Market and also spoken with individual stall holders who trade at St. Dogmaels on a Tuesday morning throughout the year. They were all enthusiastic and supportive of the idea of holding a weekly market on Market Street in Newport.

We believe that local people, residents, cafes and shopkeepers will benefit by having a focal point and meeting place once a week, the provision of high quality local

produce will also attract visitors and help to promote Newport.

Produce both sourced and sold locally will also reduce the need for travelling for both customer and seller.

We hope that Pembrokeshire County Council will support our plans to hold a weekly street market on Mondays from approx 9:00am – 2:00 pm on Market Street. The market will be run for a trial period of 8 – 12 weeks with the stalls being hired from St. Dogmaels market. Newport Town Council will encourage the provision of local, high quality produce, examples could be fish and shellfish; preserves and chutneys; cheeses (Caws Cenarth), goats cheese; cakes; fruit and vegetables; herbs and plants and wild boar sausages.

If you would like more information about the market or wish to add your support to the project, please contact Paul Harries 01239 820809



Newport and District Chamber of Trade and Tourism (NDCTT) was established to:

- Consider and promote plans and schemes to improve and secure the trading and commercial interests of the traders, merchants, manufacturers, professional men and women and others of the town of Newport and surrounding district;
- Distribute information regarding the interests of members;
- Discourage unfair trading practises;
- Create and foster a spirit of goodwill, friendship and unity among members of the chamber and all local traders.

NDCTT consists of a small committee of volunteers and a membership of roughly 70 members. Currently the majority of members are within the tourist industry, but the committee is keen to get a wider spectrum of membership from all local businesses and then to be more active in supporting these.

In recent years the main object of the Chamber's efforts has been the production of the town booklet (previously 'the town map'). This is an annual publication, widely distributed (current annual distribution is 25,000 copies),

advertising the members and the services they provide. It is intended as an 'advertisement' for Newport and District both as a tourist destination, but also to advertise all businesses and facilities within the area.

The current committee is keen to encourage more communication with members and is hoping to get to a position where regular newsletters are issued. Also we are looking at providing notice boards at the town 'entrances' on the A487 again to advertise Newport to people who may be just passing through and not be aware of the many facilities and beauty of our ancient town.

The Chamber works with the Town Council, actively on the 'town website' and also with various projects such as a proposed town market, and the 'Walkers are Welcome' initiative.

NDCTT membership is open to any person, company or organisation interested or actively engaged in Newport and surrounding district. If you are interested in joining, want further information, or indeed have ideas to put forward, please contact Laura Benham, Chairperson, Holmws, Newport, SA42 0UF

Tel: 01239 821030 / 07974789223  
email [benham.holmws@virgin.net](mailto:benham.holmws@virgin.net)

Consultation meetings will be held shortly with Trysor to consult with local people on the first draft of the area heritage audit. This has involved an audit of the area's 'Sites of Special Scientific Interest' and other areas of special interest including landscape; identifying heritage sites with significant above ground evidence and where necessary, practical work to be undertaken.

The aim of the audit was to identify and record the heritage and landscape sites within each community council area. It must be stressed that it was not intended that such an audit would capture all relevant information, but would act as a starting point for interpretation and further research and recording.

The report is structured to cover many heritage and environmental aspects i.e. Natural Heritage (designations and attractions), heritage archaeology, history and culture); Interpretation and tourism related commerce and the opportunities for future community projects (if not already in place) for example:

- Local History Exhibitions & Talks
- Leaflets
- Oral History Projects
- Community Newsletters & Websites
- Interpretation Panels

- Use of modern technologies
- Archiving community resources

An example of a project that has been developed in another area is 'The Treasure Trails' project which involves the development of an innovative interpretation service using mobile phone message services (where coverage permits). It will utilise site specific data from the Audits and link to way marked footpaths in the hub area. Local History/Culture Groups and walking and footpaths groups are encouraged to be a part of the project for the identification of suitable routes, linking the relevant historical and environment information and testing the trails.

**Trysor will be presenting their draft findings to the community on 11<sup>th</sup> May 2011.**

**Please come along to the Memorial Hall at 7pm to hear more about what they have discovered about your community. This will be a DRAFT report and they would welcome your thoughts and comments.**

# Newport Community Energy Project & The People's Power Station

A new and exciting project is beginning to take shape called the Newport Community Energy Project (NCEP)

Working with West Wales Eco Centre, this is a collaboration between NAEG (Newport Area Energy Group) and The Memorial Hall to install photovoltaic panels (PV) onto the Memorial Hall roof. The electricity generated will go into the national grid as well as providing renewable electricity for the Hall. Under the current government scheme, the project would receive a feed-in tariff based on the amount of energy the panels produced.

Matt Lease at West Wales Eco Centre has produced a feasibility study of the project and has advised NCEP to apply for a People and Power Station Fund which will provide some of the project costs.

NAEG and the Memorial Hall are excited by what this could bring to the community. It could be a spring board for other environmental projects and the income from the feed in tariffs will be designated to benefit the community while fitting into an environmental agenda. For more information, please contact Siobhan Ashe 01239 821176

## Newport Allotments

There has for some time been a desire to identify a piece of ground in Newport to be used by local people for allotments. With a developing interest in 'Growing your own Food', the Newport Community Forum has been working to find a suitable space. Negotiations are now taking place with the Barony Solicitor regarding the renting of a small field on the lower slope of Carningli. An allotments association has been set

up. At present the association is waiting for a meeting with the Barony Surveyor at the site to discuss the matter further. A PLANED officer who is working with other Allotment groups in Pembrokeshire sites has been invited to attend to provide experience and advice. If you would be like more information about the project, please contact Liz Docwra

[1havard@talktalkbusinessnet](mailto:1havard@talktalkbusinessnet)